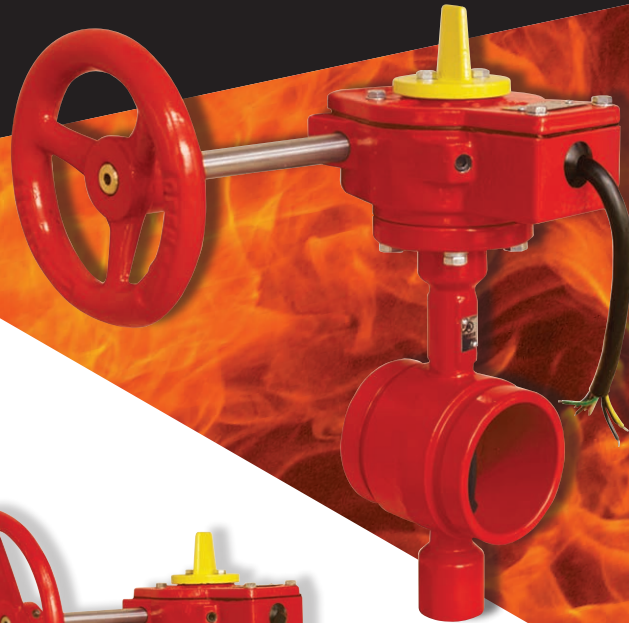




FIRE PROTECTION VALVES



FIREGUARD GLOBAL LTD.

Tel: 00-44-8450751042 • Fax: 00-44-8459751043
Email: Info@Fireguard-Uk.com • www.fireguard-Uk.com

Unit 11 • Chancel Industrial Estate • Newhall Street
Willenhall • WV13 1NX • United Kingdom



FS546607

FIRE PROTECTION VALVES

GATE VALVES

Fireguard Valves, Resilient wedge designed for optimum performance and incorporates a backup seal with the O- ring plate. Features a light weight body with Corrosion resistant coating Inside & Outside. Wedge is permanently bonded with Rubber seal.

Flanged Model: OS&Y: FG0907
NRS: FGN909

Grooved Model: OS&Y: FG0135
NRS: FGN105

- Ductile Iron Body
- Size Range: 2" – 24"
- OS&Y, NRS
- Fusion Bonded Epoxy Coating in accordance with ANSI /AWWA C550
- Fully Encapsulated Disc for bubble tight pressure
- Working Pressure 2" -10"- 300Psi, 12" – 18"- 250 Psi, 20-24" – 200 Psi
- Taping Boss for connection to additional devices or measurement
- Confirming to AWWA C509
- Corrosion resistance
- EPDM bonding on Wedge confirming to ASTM D429
- UL Listed & FM approved
- Option of Ends :
Flanged - ANSIB16.1 / B16.42

SWING CHECK VALVE

Fireguard Check Valve is a compact, rugged swing-type unit providing water flow in one direction and preventing flow in the opposite direction. The Valve Features a light weight ductile iron body and SS internal components for superior corrosion resistance. Suitable for vertical and horizontal installations. The valve is furnished with flanged or grooved ends for ease of installation.

Flanged Model: FCF01

Grooved Model: FCG01

- Ductile Iron Body confirming to ASTM A536
- Flange drilling and dimensions to ANSI B16.1, 125 lb. pattern.
- Groove dimensions comply with AWWA C606 standard.
- Face to face dimensions conform to AWWA C508
- Working Pressure: 300 Psi /350 Psi
- Fusion Bonded Epoxy Coated, Interior and Exterior to AWWA C550
- Sizes Range 2" to 12"
- Working temperature -10 Deg C to 120 Deg C
- Designed for minimal Water Hammer
- UL Listed & FM approved
- Options of Ends :Flanged : ANSI / PN10/ Pn 16 Grooved

BUTTERFLY VALVES

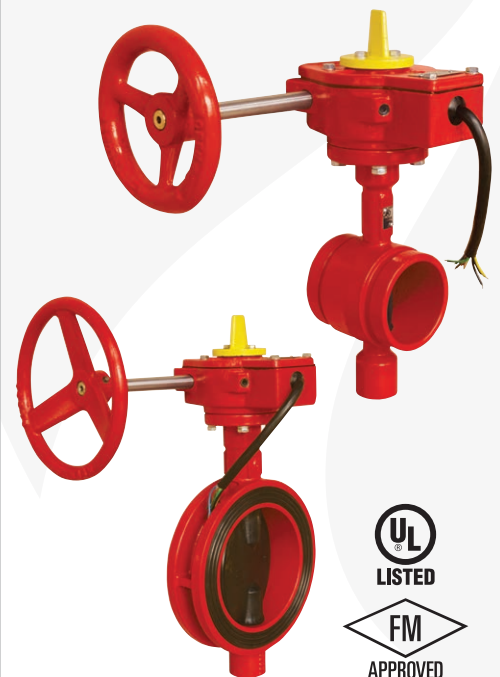
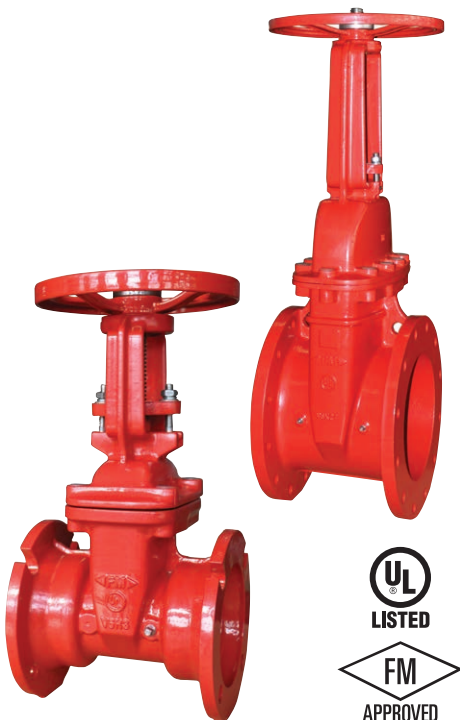
The Grooved End & Wafer type Butterfly valves are indicating type designed for use in fire protection systems where a visual indication is required as to whether the valve is open or closed. Valve Features a compact and lighter body with factory installed internal switches having SPDT contacts. The supervisory switches transfer their electrical contacts when there is movement from the valves normal open position during the first two revolutions of the handwheel.

Grooved Model: FG-BO-G 300

Wafer Model: FG-BO-W 300

Flanged/Grooved Model: FG-BF-G 300

- Ductile Iron Body confirming to ASTM A536.
- Poly Amide Coating
- Fully Encapsulated Disc for Bubble tight pressure
- Size Range 2" to 12"
- Working pressure 300 Psi
- Gear Box for easy operation and to reduce torque
- Built in Supervisory Switches for ease of monitoring
- UL Listed & FM approved
- Option of Ends : Grooved & Wafer, Flanged-Grooved





ALARM CHECK VALVES

Alarm Valve is a double seated clapper check valve with grooved seat design, which ensures positive water flow for alarm operation and is designed for installation in wet pipe sprinkler system. External bypass prevents false alarm under all supply pressure condition.

In the event of variable pressure condition, false alarm is prevented with the provision of retard chamber, thus the design allows for installation under both variable and constant supply pressure condition. Operation of one or more automatic fire sprinklers causes the water to flow into the sprinkler system causing the alarm valve to open, allowing continuous flow of water into the system and transmittal of alarm, both electrical and mechanical.

Model: H

- Ductile Iron Body conforming to ASTM A536
- Double seated Clapper design
- Compact design and small foot print.
- Smooth operation under variable pressures
- Vertical Installation
- Sizes Range 2" to 8"
- Working Pressure 250 Psi
- UL Listed and FM Approved
- Options of Ends: Flanged / Grooved
- Epoxy PU coated with Red RAL 3001



DELUGE VALVES

Deluge Valve is an automated system control valve, used for fast application of water in a spray system. Deluge valve protects areas such as power transformer installation, storage tank, conveyor protection and other industrial application etc. With the addition of foaming agent deluge valve can be used to protect aircraft hanger and inflammable liquid fire. Deluge valve is a quick release, hydraulically operated diaphragm valve. It has three chambers, isolated from each other by the diaphragm operated clapper and seat seal.

- Model:** C1 (Cast Steel)
- Model:** D1 (Ductile Iron)
- Model:** N1 (Nickel Al Bronze)

- Ductile Iron Body conforming to ASTM A536
- Double seated Clapper design
- Compact design and small foot print.
- Smooth operation under variable pressures
- Reset Automatically
- Flexibility of Horizontal & Vertical Installation
- Sizes Range 2" to 8"
- Working Pressure 250 Psi
- UL Listed
- Options of trims and actuations
Dry Pilot Trim, Wet Pilot Trim,
Electric Trim & Test and Alarm Trim
- Epoxy PU coated with Red RAL 3001

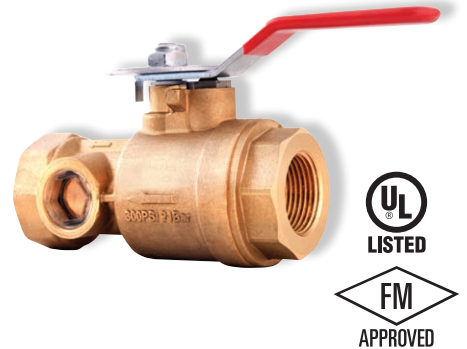


TEST & DRAIN VALVES

Test & Drain with an integral sight glass assembly, provides a simplified means for testing of waterflow alarm devices and draining of feed mains. Test and drain valve is a 300 PSI rated single handle ball valve that was specifically designed to provide both the test function and the express drain function required for a wet fire sprinkler system. It include tamper resistant test orifice and sight glass for maximum visibility when operated.

Model: FGT1000

- Sizes 1", 1 ¼", 1 ½" & 2"
- K factor : 5.6 & 8.0
- Brass Body with three Position (OFF/ TEST / DRAIN)
- Pressure rating 300 Psi
- Operating Temperature range -10 to 120 Deg C
- Tamper resistant test orifice
- UL Listed & FM approved.



“ We thrive on using modern technology, innovation and market-leading designs to ensure that Fireguard Systems always provide cost-effective and reliable solutions to a wide range of fire detection and protection applications. ”



PRE ACTION SYSTEMS

The Single Interlock with Wet Pilot Actuation and Double Interlock Pre action System with Electric/ Pneumatic Release is generally used to protect water sensitive areas such as computer rooms, storage areas of valuable articles, to avoid water damage due to damaged sprinklers or damaged sprinkler piping.

Preaction System is also effectively used to have Pre-alarm of a possible fire condition and allows time to extinguish fire by hand held fire extinguishing equipment, prior to water discharge through sprinkler heads. It uses an automatic sprinkler with supplemental detection system. In the event when fire cannot be extinguished by hand held fire extinguishing equipment, the increase in temperature will open one or more sprinkler heads to discharge water.

Models:

Single Interlock Preaction with Electric Release

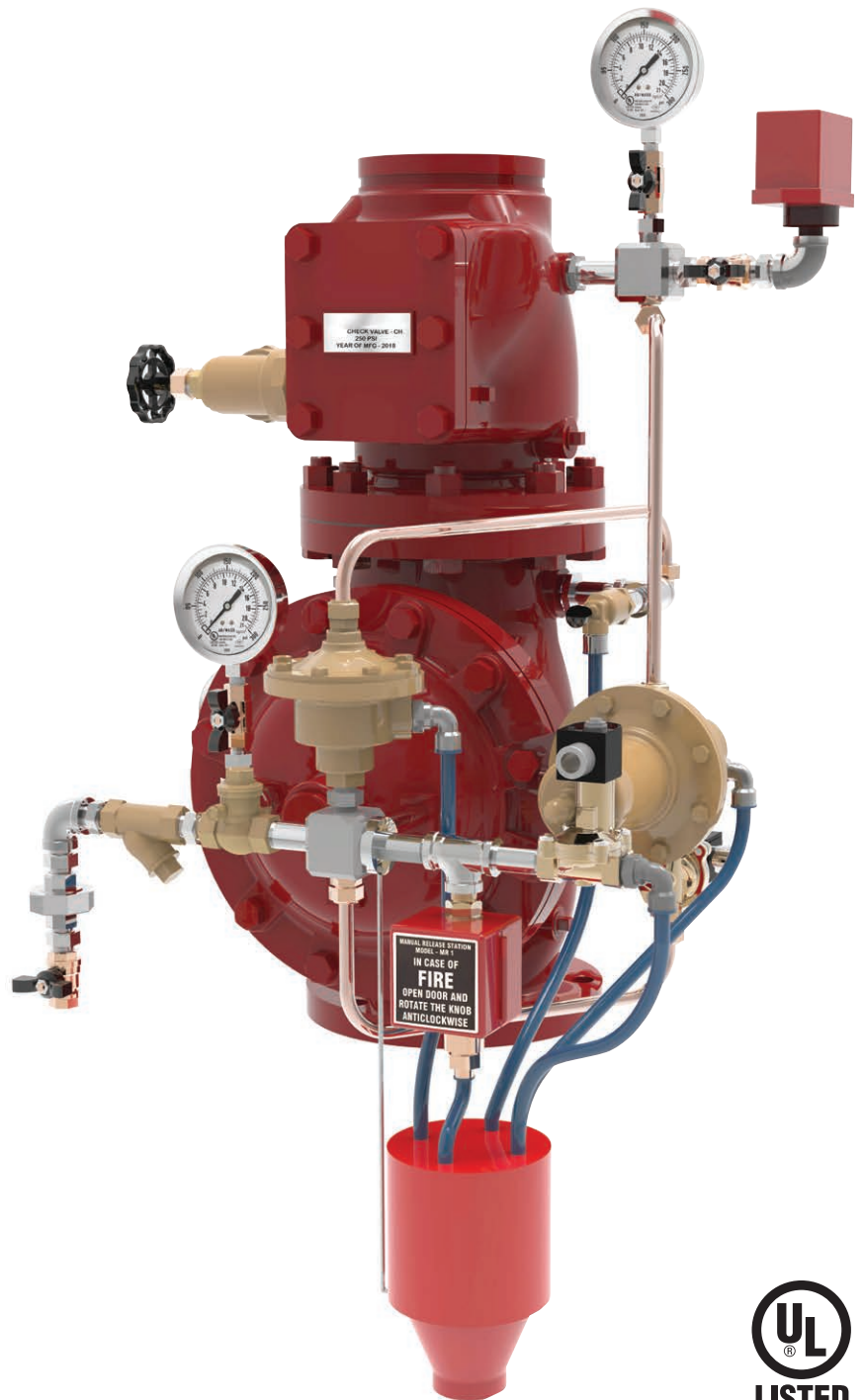
Single Interlock Preaction with Dry Pilot Actuation

Single Interlock Preaction with Wet Pilot Actuation

Double Interlock Preaction with Electric/Electric Release

Double Interlock Preaction with Electric/Pneumatic Release

- The system utilizes UL Listed Deluge Valve Model D1 & Check Valve Model FCF01
- Size: 2", 3", 4", 6" & 8"
- Can be supplied with or without Release Panel, Compressor, Butterfly Valve and Air Maintenance Device
- Water Motor Gong Bell is optional supply
- Valve can be Groove or Flange end connection
- Supplied as pre-assembled or loose
- Supplied with or without Release Panel, Compressor, Butterfly Valve and Air Maintenance Device
- UL Listed



“ Fireguard aims to be customer’s first choice to safeguard from hazardous fires, by designing, developing the latest technology products with high quality and reliability.”



FIREGUARD GLOBAL LTD.

Tel: 00-44-8450751042

Fax: 00-44-8459751043

Email: Info@Fireguard-Uk.com

www.fireguard-Uk.com



Unit 11 · Chancel Industrial Estate · Newhall Street
Willenhall · WV13 1NX · United Kingdom



FS546607