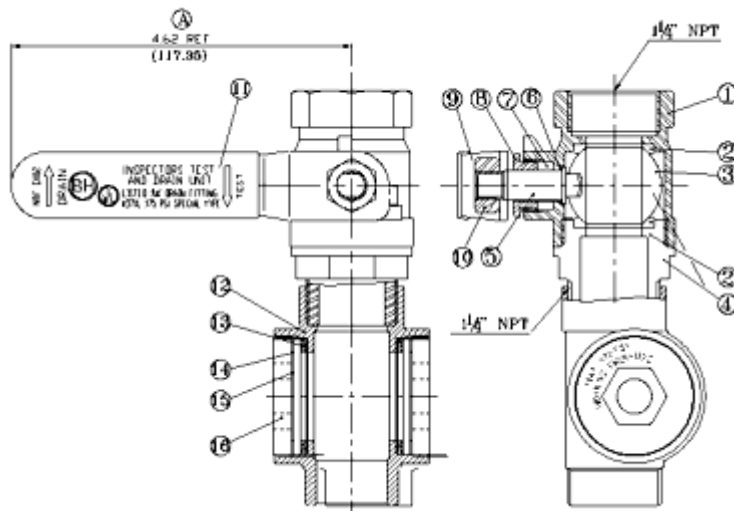




## Test & Drain Technical Data



Fireguard TESTANDRAIN is a 300 PSI rated single handle ball valve that was specifically designed to provide both the test function and the express drain function required for a wet fire sprinkler system. It features a tamper resistant test orifice, integral tamper resistant sight glasses, and a tapped port for system access. Fireguard TESTANDRAIN meets all the requirements of NFPA-13, NFPA-13R, and NFPA-13D. Available in 1", 1-1/4" and 2" sizes in both NPT and BSPT

### OPERATING INSTRUCTIONS:

#### TO TEST:

1. Turn valve handle counterclockwise from "Off" to "Test". The handle will stop automatically.
2. After test is completed, return handle to "Off".

#### TO DRAIN:

1. Turn handle counterclockwise from "Off" to "Test". The handle will stop automatically.
2. Depress "Push" button and turn handle to "Drain".
3. When system is empty, return handle clockwise to "Off" position.

### INSTALLATION INSTRUCTIONS:

1. Check the indicating plate for the correct orifice size.
2. Thread the pipe nipple into the inlet of the test and drain.
3. Thread the pipe nipple and the test and drain into the outlet on the feed main.
4. Thread piping from outlet of test and drain to an acceptable drain fixture or active express drain as required.