



PRESSURE REDUCING VALVE MODEL FGP501

FIREGUARD Pressure Reducing Valve is mainly used in a hose reel system to reduce the pressure at the inlet of the hose reel to the nominal working pressure.

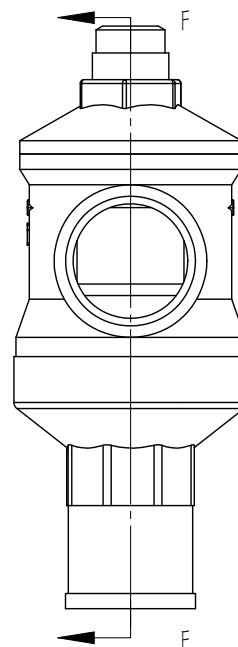
When the Inlet pressure from the mains is too high and variable pressure reducing valve stabilizes the down stream pressure to the required nominal working pressure. This range of pressure reducing valve allows you to adjust the downstream pressure to the required setting.

Fireguard pressure reducing valve is according to council directive 97/23/EC (PED).

Minimum and maximum working temperature range is 0°C to 80°C



Model FGP501



For the best use and duration of the system, it is necessary to comply with the instructions on installation, with the national regulations and with relevant local requirements.

Place of installation has to be protected from frost and has to be easily inspectable.

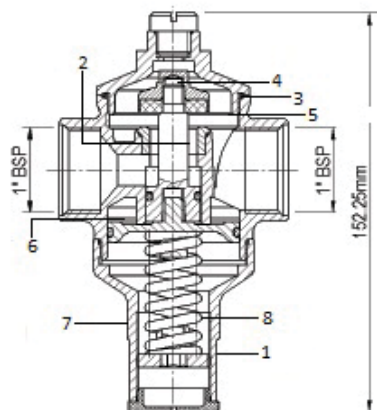
Install the pressure reducing valve on the water system, immediately downstream of the water meter.

It would be better to install shut-off valves upstream and downstream of the pressure reducing valve, to facilitate the maintenance operations.

In order to protect pressure reducing valve from overpressure, install a check valve immediately downstream of the pressure reducing valve.

It is strongly recommended that the ratio between maximum upstream pressure and regulating downstream pressure does not exceed the value of 2,5. - Pressure reducing valve is not a safety device.

It would be better to install all the necessary safety relief valves.



1" Pressure reducing valve (PRV)

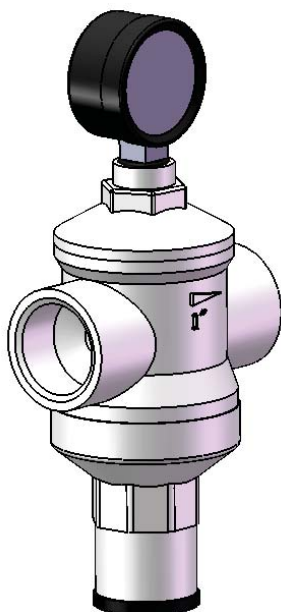
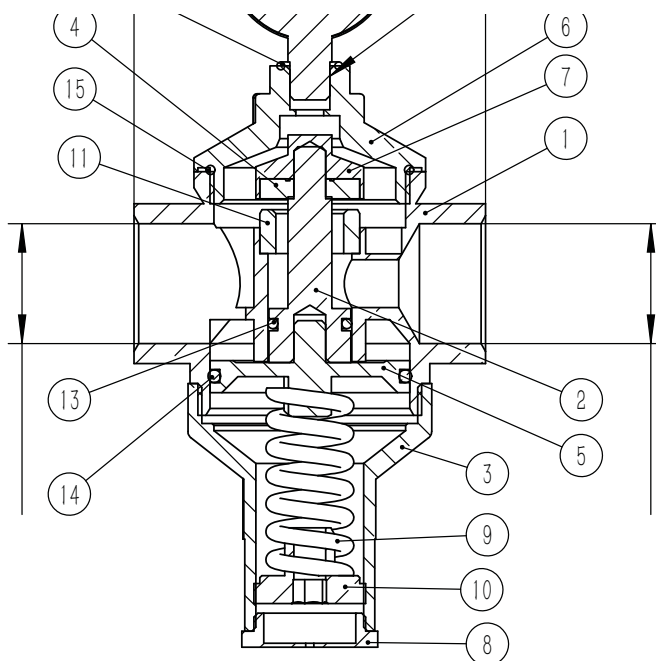
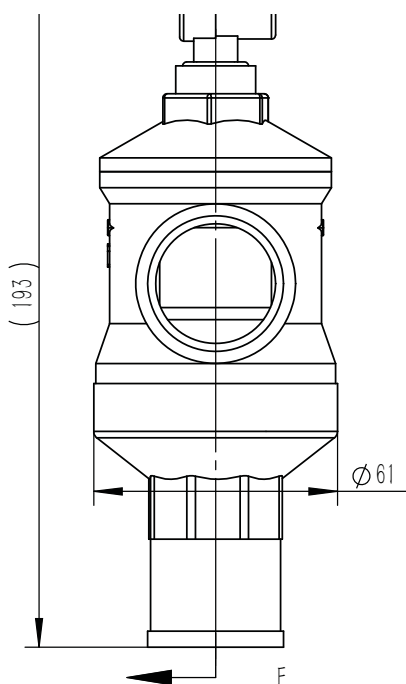
1	Body	Nickel plated brass
2	Stem	Brass
3	O-Ring	EPDM
4	Shutter	Brass
5	Flat seat washer	EPDM
6	Diaphragm	Brass
7	Upper Plug	Nickel plated brass
8	Spring	EN 10270-1 DH

Inlet Pressure: Maximum 25 Bar

Outlet Pressure: Adjustable from 1-6 Bar



PRV WITH PRESSURE GUAGE



16	Radial, 1/4" thread	2530-036A	1
15	o-ring 52X2.3	JD01-100-06-16	1
14	o-ring 51X3.2	JD01-100-06-15	1
13	o-ring 21X2.5	JD01-100-06-14	1
12	o-ring, 16.5x2	JD01-100-06-13	1
11	bushing, 25x17x11	JD01-100-06-11	1
10	spring seat, M28x19	JD01-100-06-10	1
9	Spring, 47x4	JD01-100-06-09	1
8	Plug, 34x8.5	JD01-100-06-08	1
7	spool, 27x16	JD01-100-06-07	1
6	valve seat, 58x34.5	JD01-100-06-06	1
5	piston, 50x24	JD01-100-06-05	1
4	Shim, 25x8x5	JD01-100-06-04	1
3	Copper base, 62x61x27.5	JD01-100-06-03	1
2	Pull rod, 54x20.5xM8	JD01-100-06-02	1
1	valve body, 88X61	JD01-100-06-01	1



1" PRESSURE REDUCING VALVE TESTING PROCESS



PRV



outlet

inlet



Note: the mark for the outlet and inlet



Outlet Pressure Gauge



pressure adjustment



inle Pressure Gauge

This pressure reducing valve is mounted to the fire hose reel cabinet. It's mounted on the inlet end, when the water pressure is more than 6 BAR, it will control and reduce the pressure within 6BAR, helping the smooth operation of fire hose reel.